

LIVING IN I'ON

It's a way of life, not just a place to call home

OCTOBER EVENTS

FRI	10/3	First Friday
TUE	10/14	Women's Coffee
N/A	N/A	Potluck Dinner
THU	10/16	Lunch Bunch
WED	10/22	Yarn Buddies
SUN	10/26	Halloween in the Hood
TBD	TBD	Women's Movie Night
SAT	11/1	I'On Yard Sale

Important Dates

WED	10/1	Yom Kippur
THU	10/2	Recycling Pickup
TUE	10/7	IDC Meeting
MON	10/13	Columbus Day
TUE	10/14	IDC Submittal Deadline
THU	10/16	Recycling Pickup
TUE	10/21	IDC Meeting
TUE	10/28	IDC Submittal Deadline
TUE	10/30	Recycling Pickup
FRI	10/31	Halloween

Early Voting for Municipal Elections
Monday, October 20 - Friday, October 31
(closed on Saturday and Sunday)
Early voting centers are open
8:30 a.m. - 5:00 p.m.

DOCK CLOSINGS ON PAGE 2

2025 I'On Board Meetings
Monday Nights
6:00 p.m.
Conference Room
159 Civitas Street

October 20
November 17
December 15



I'On Assembly Seeks Candidates

Each year during the annual meeting in January, I'On holds open elections for candidates who are interested in serving a two-year term on the I'On Board of Directors. For the 2026-2027 terms, there will be three (3) two-year term positions and one (1) one-year position for Board seats available to candidates.

Your current Board of Directors encourages you to get involved in the future direction of I'On by running for a board seat or encouraging a neighbor to get involved. Board members are available between now and the January election to discuss the job responsibilities and what it is like to serve on the board.

All we ask is that you can commit to at least two hours a week and have an open mind about making decisions that are in the best interest of all 761 titleholders.

The Board welcomes all residents to attend our monthly meetings, typically held the third Monday of each month. This is a great way to personally get a feel for how the Board operates.

Upcoming board meetings are scheduled for October 20, November 17, and December 15.

If you are interested in serving on the Board, please complete and submit the 2026 Board Application ([HERE](#)) to Emily Simpson by November 30th.

Please contact our General Manager, Emily, if you are interested in learning more: esimpson@ravenelassociates.com

2025-2026 Board of Directors

Tom O'Brien - Board President
Bob Adams - Vice President/Treasurer/Finance Chair
Stephen Wood - IDC Liaison
Roy Rathbun - Landscape & Infrastructure Chair
Elaine Blaisdell-Taylor - Secretary/Communications Chair
Lon Waggoner - Covenants Chair
Donna Davis - Amenities Chair





DOCK CLOSINGS - OCTOBER 2025

DATE OF EVENT	EVENT TYPE	CERMONY TIME
Friday, October 3rd	Wedding & Reception	4:55 - 5:25
Saturday, October 4th	Wedding & Reception	4:25 - 4:55
Sunday, October 5th	Wedding & Reception	4:55 - 5:25
Friday, October 10th	Wedding & Reception	4:25 - 4:55
Saturday, October 11th	Wedding & Reception	5:25 - 5:55
Sunday, October 12th	Wedding & Reception	5:10 - 5:40
Saturday, October 18th	Wedding & Reception	4:25 - 4:55
Sunday, October 19th	Wedding & Reception	3:55 - 4:25
Friday, October 24th	Wedding & Reception	4:25 - 4:55
Saturday, October 25th	Wedding & Reception	4:25 - 4:55
Thursday, October 30th	Wedding & Reception	4:25 - 4:55

For an up-to-date list of common area reservations, please visit the community calendar located on our website! <https://ioncommunity.com/calendar/>

FIRST FRIDAY

Friday, October 3 - 6:00 to 8:00 p.m.

Hosted by Barbara and Robert Adams at 35 Eastlake Road



Many thanks to Mary Kaplan and Fred White for hosting us in their lovely garden last month, and to Country and Lace Florist for providing our hosts with an arrangement. No need to RSVP, just please remember to bring your own libations, drinking glasses and a small appetizer to share. We have all months open for 2026, please contact Wendy Nixon (203) 858-7909 or Karen Rathbun (973) 985-7983, if you would like to host.

After 5+ years, Wendy Nixon would love to transition out of this post.... Please contact anyone on the board or Wendy (number above). if you would like to take over First Fridays. it's easy and a great way to meet your neighbors. Karen Rathbun will also be stepping down at the end of this year.

WOMEN'S COFFEE

Tuesday, October 14 - 10:00 a.m. to 12:00 p.m.

Hosted by Margie Bondy at 107 Civitas Street



Thank you to Margie Bondy for hosting this month's Women's Coffee. No RSVP needed. Bring a cup for coffee or tea and join us. For further information, contact Abigail Wolitzer at abbywolitzer@yahoo.com or Farrah Follmann at ffollmann@yahoo.com.

POTLUCK DINNER

IS TAKING A POTLUCK BREAK IN OCTOBER



Potluck dinner is on a break in October. We enjoyed a great night in September seeing neighbors, enjoying wonderful food and playing some fun competitive games of bingo. Thank you to Deb and Craig Ferrer for hosting.

LUNCH BUNCH – ANNUAL HAT LUNCHEON**Thursday, October 16th - 2:00 p.m.****East Bay Meeting House, 160 East Bay Street, Charleston****(<https://eastbaymeetinghouse.com>)**

This year's annual Hat Luncheon will be held with a twist: High Tea at the East Bay Meeting House in Charleston. The cost will be \$55.00 Regular Tea Service/\$63.00 with a glass of champagne + applicable taxes and a 20% gratuity. Each participant can pay their individual tab at the time of the event. Space is very limited for this event and all food is MADE TO ORDER. Any cancellations within 48 hours will be charged \$25.00.

Please RSVP to Kristen Anderson at kristenande@gmail.com, NO LATER THAN October 2nd. Those who respond after the maximum is reached will be placed on the waitlist.

YARN BUDDIES**Wednesday, October 22 - 10:00 a.m. to 12:00 p.m.****Hosted by Kathy Coffman at 324 North Shelmore Boulevard**

Kathy Coffman is hosting Yarn Buddies at her home this month. Please let Kathy know if you are able to attend, via text: (224) 622-7859 or email: kcoff@comcast.net.

Yarn Buddies was formed to encourage creativity, share imagination, offer assistance, and inspire those who have an interest in the handcrafted arts. Anyone interested in the arts of handwork, be it knitting, crocheting, needlepoint, jewelry making, quilting, crewel, embroidery, cross-stitch, etc. are warmly invited to attend.

I'ON WOMEN'S MOVIE GROUP**Sign up to receive future movie dates and times...**

For those of you on the list, please watch for another e-date in your e-mail. To join the list, please contact Jan Laabs at laabsjan@hotmail.com.

🎃 Classic Halloween Essentials

1. Halloween (1978) – The original slasher film that started it all.
2. Hocus Pocus (1993) – Witchy fun and campy magic; a family favorite.
3. The Nightmare Before Christmas (1993) – A Tim Burton classic for Halloween and Christmas.
4. Beetlejuice (1988) – Strange and spooky with iconic performances.
5. Practical Magic (1998) – Romantic, magical, and very '90s.

👻 For Horror Fans

1. The Exorcist (1973) – Still terrifying after all these years.
2. A Nightmare on Elm Street (1984) – Freddy Krueger's first nightmare.

👧 For Teen and Young Adult Audiences

1. Scream (1996) – Meta-horror at its finest.
2. Coraline (2009) – Stop-motion dark fantasy with creepy charm.
3. The Craft (1996) – High school witches and '90s goth vibes.
4. Jennifer's Body (2009) – Cult horror-comedy with bite.

👨‍👩‍👧 Family-Friendly Halloween Movies

1. Casper (1995) – Friendly ghosts and childhood nostalgia.
2. Monster House (2006) – Animated, spooky, and surprisingly intense.
3. Hotel Transylvania (2012) – Silly monsters and family themes.
4. Frankenweenie (2012) – A heartwarming Burton tale with gothic flair.
5. ParaNorman (2012) – Zombies, ghosts, and a kid with sixth sense.

THIS MONTH WITH THE I'ON TRUST



HALLOWEEN IN THE HOOD

**SUNDAY, OCTOBER 26TH 4:00 TO 6:00 PM
ON THE MAYBANK GREEN**

Calling all witches, monsters, and ghosts. The I'On Trust will be your host! Wear your best costumes for some Halloween happenings in the hood. Join us for an early evening of fun, featuring kid's games, costume contests, jump castles, and more...

Leigh Willard will be the lead coordinator for this wonderful annual event, but Leigh needs your help. We can't have events without the involvement of neighbors to ensure their success.

Please contact Leigh at leigh.willard@yahoo.com to volunteer your help and ensure the success of Halloween in the Hood.



Ghosts, witches, and bats should fly on in.
We're so excited for the fun to begin!



THE NEW LINK FOR SIGN UP FOR HALLOWEEN IN THE HOOD IS [HTTPS://SIGNUP.COM/GO/OSAHYAC](https://signup.com/go/OSAHYAC)

I'On Trust Board Members Needed



New to the neighborhood or have lived here awhile?
We are seeking fun people to serve on the I'On Trust Board.
We meet quarterly and if you can help with an event or 2 we would love to meet you!
Please reach out to Antonia Fokas at admin@iontrust.org.
Without the help of neighbors we couldn't have all the fun events that makes I'On a special place to call home.

[LEARN MORE ABOUT THE I'ON TRUST HERE](#)

THE GIVING LIGHTS OF I'ON

Sunday, December 7



FRIENDS OF MORNING LIGHT
Supporting the work of Star Gospel Mission
2025 Giving Lights Recipient

We are delighted the 2025 Giving Lights fundraiser will support Friends of Morning Light, a special initiative of Star Gospel Mission. This year's campaign will raise funds and awareness for Morning Light, a transitional housing program created to support women and children in Charleston County who are experiencing homelessness. Donations will directly benefit this vital project, helping vulnerable families rebuild their lives with dignity, safety, and hope. We look forward to another successful year!

Our terrific volunteers will be dropping off order forms at your homes as well as being available to answer questions. If you would like to volunteer to help us with this effort please contact admin@iontrust.org.

If any individuals, groups or businesses are interested in sponsoring the Giving Lights material cost, please reach out to admin@iontrust.org. Supplies will cost about \$3,000 for 13,000 luminaries. This includes shipping costs, sand, and luminary materials.



A September to Remember with IAH

September was a busy month for IAH with events and interesting programs to suit all interests!

With many of our members returning from summer travels, IAH's fall calendar was in full swing. Our members gathered for happy hours and "Bros and Brews" at local favorite Community Table. As well, some of our favorite get togethers like Driveway Drinks, and interesting panel discussions like our Public Affairs panel and our Great Decisions discussion group all returned from their summer hiatus.



In September, IAH members dove into the latest technology with a presentation and discussion on how to use AI in our daily lives. Additionally, our members ventured downtown to take in special exhibits at both the Gibbes and the Charleston Museum, where we had a wonderful docent led tour of a special art exhibit focused on Harriet Tubman and toured the latest textile exhibit. Finally, September also saw Dr. Porcher return for a lecture on local history, with a focus on the Santee Canal as well as an important information session about hospice care from a retired hospice nurse.

Over 55, I'On At Home is for you!

Join us and become a part of a lively group of neighbors interested in learning new things, having fun sharing cultural and social activities and helping each other.

Contact Elizabeth Sage, IAH Administrative Manager: elizabeths@ionathome.org
or visit us at: <https://ionathome.helpfulvillage.com/>



I'ON ECO GROUP TO CONCLUDE ACTIVITIES IN OCTOBER 2025

After nearly five years of service to our community, the I'On Eco Group will conclude its activities as of October 2025.

The group began in January 2021 with 11 enthusiastic members and a shared vision for making a positive environmental impact in our neighborhood. Over the years, our numbers have naturally decreased as members move on to other projects and commitments.

While we haven't solved every challenge, like the dream of eliminating noisy leaf blowers or increasing solar power use, we are proud of what we have accomplished together. Among our successes are new littoral plantings on Eastlake, reduced goose traffic, cleaner lakes, and decreased erosion along the shoreline. Just as importantly, we've kept environmental issues front and center by sharing information through this newsletter and our dedicated webpage: <https://ioncommunity.com/resident-services/ion-eco-group/>

As we wrap up, we hope that others in the community will carry the torch and continue efforts to protect and enhance the natural surroundings that make I'On such a special place to call home. If someone would like to continue this work, we would be delighted to work with them in every way to pass along what we've learned and keep the torch burning. Anyone interested can reach out to Carol Degnen at cdegner@gmail.com.

We extend our heartfelt thanks to everyone who has supported our work over the years, it has been an honor to serve this community.



I'On Eco Group: Preserving I'On's beauty through sound environmental practices. For information, visit <https://ioncommunity.com/resident-services/ion-eco-group/>

BUTTERFLY GARDEN

A Butterfly Garden is More than Butterflies

by April Gordon



**Don Gordon photographs
sunchoke plant**

There are so many butterflies in I'On's Butterfly Garden this time of year that on a recent warm, sunny day three Team BG (butterfly garden) volunteers (Barbara Gilbert, Don Gordon, and April Gordon) decided to devote part of a day observing and photographing butterflies. Looking for butterflies is one of the most fun activities we BG volunteers do (certainly more fun than weeding!). Similar to birdwatching, "butterfly watching" helps us learn the names of the diverse butterflies visiting the garden and observe their activities. Also like bird photography, getting good photos of butterflies can be a challenge since our subjects fly and often do not stay still long enough to get a good—or any—photo of them.

With perseverance, however, we did manage to get some good butterfly shots. But we also discovered some less well known garden inhabitants. While researching them, I found them to be so interesting that I decided to write about a few of them and save the butterflies for a future newsletter. I think you will agree that they are as fascinating and beautiful as butterflies. And you will learn more about them and their vital environmental roles in maintaining ecological balance and biodiversity.

As we began exploring the garden we admired the many flowers, including some newly blooming sunchoke, a native sunflower. Sunchoke, also called Jerusalem artichokes, have delicious edible tubers that were an important food source for Native Americans and are a specialty food item today. In our garden they provide pollen and nectar for many butterflies and bees.

We first noticed a Gulf fritillary butterfly and then a carpenter bee on the flowers. I wanted to get a photo of the carpenter bee but the only good one, shown here, was on a garlic chive and reveals the bee's vivid blue iridescent and black colors. Carpenter bees are one of our largest native bees, and like other native bees they are major pollinators of both native plants and our food crops. It is good to know that as formidable as carpenter bees appear, they are not aggressive and rarely sting people.



**Barbara Gilbert and April Gordon
watching for pollinators on sunchoke**



Carpenter bee on garlic chives

We then checked out some of our milkweed, the only host plant for monarch butterflies. We saw several monarchs, some laying eggs on the leaves, while other butterflies and bees were enjoying nectar from the flowers. I turned over some leaves to check for tiny white monarch eggs or caterpillars, and noticed this pretty little egg cluster on one of them. I took a photo and from my research discovered that they are ladybug eggs. The underside of a milkweed leaf was the perfect place for them, because ladybugs and their larvae love to eat the aphids that feed on milkweed leaves. Once the eggs hatch, their meals will be readily available! And with fewer aphids there is more food for caterpillars.

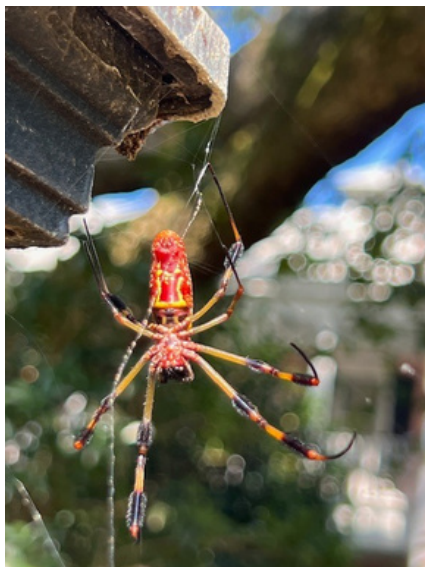
More Butterflies and Bugs on page 8...

A Butterfly Garden is More than Butterflies

Continued from page 7



Lady bug eggs on underside of milkweed leaf

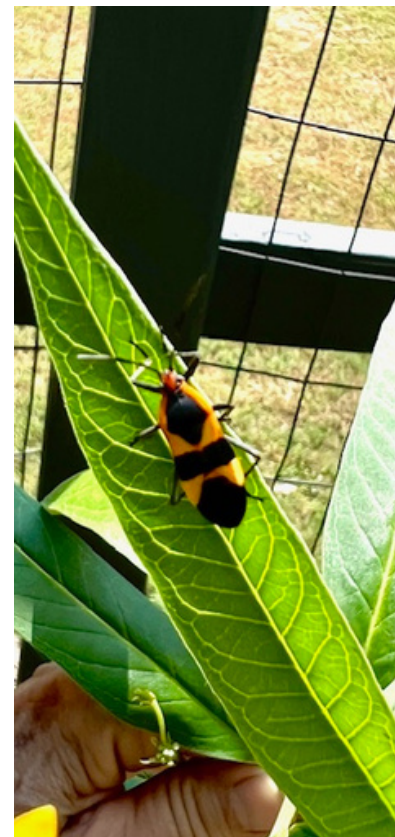


Joro spider on garden fence post

On some other milkweed plants striking orange and black milkweed bugs were crawling around the flowers and seed pods. Because they eat milkweed seeds, they might be considered “pests”. Instead, milkweed bugs play a beneficial role by controlling the spread of too many milkweed plants. And like monarch butterflies, the bright coloration on the bugs is advantageous as a warning to predators that they are unpalatable due to the chemicals in the milkweed they eat.

As we were about to leave the garden, Barbara noticed a large spider on a fence post where our garden sign is located. It was a Joro spider and belongs to the family of orb spiders noted for their large wheel-shaped webs. Although imposing in size, Joros are not aggressive or dangerous to people. They are in fact beneficial in the garden by eating pest insects such as stink bugs and mosquitoes. On the other hand, this strikingly beautiful spider is raising concerns for other reasons. It is a non-native species from Asia first discovered in Georgia in 2014 and has spread to South Carolina and other contiguous states with no end in sight. Like other non-native species of plants and animals, Joros may become invasive and environmentally disruptive by outcompeting native spiders and disrupting ecosystems. The verdict is still out.

Our garden “safari” for the day has ended, but we invite you to do your own discovery trips. Admire the butterflies and plants, then take some time (and photos) to learn about the other fascinating living things that make a butterfly garden.



Milkweed bug on milkweed leaf

Contact April Gordon (dr.aprilgordon@gmail.com) to learn about becoming a Team BG volunteer

I'ON COMMUNITY GARDEN

It's Time to Prepare your Fall-Winter Garden

by April Gordon



The gardens of late September are still growing but past their peak. It's time to move to fresh fall-winter crops

With summer weather still entrenched in coastal South Carolina, community garden plots in late September are predominantly filled with warm-weather plants. However, many are nearing the end of their productive lives reminding us that it is time to begin converting our gardens to cool-weather plants that will begin growing while it is still warm but thrive as the weather turns chilly. In fact, in our mild climate, many of these crops can withstand frost and freezes to overwinter and last through the spring!

Compared to summer gardening, growing during the chillier months ahead can provide multiple rewards. Among these are less work such as watering or combatting weeds, diseases, and pests. Another benefit is being able to grow healthy and delicious edibles such as various herbs, greens, brassicas, and root crops that are mainstays of the warm, hearty soups and stews we love to eat on cold, wintry nights. Some of the best options for what to plant in October include **cabbage, cauliflower, broccoli, mustard greens, lettuce, radishes, beets, arugula, spinach, rutabaga, onions, turnips, collards, and kale**. For those who are adventuresome and want to try some less well known but delicious vegetables you can go online or to your garden center to find seeds for **kohlrabi, parsnips, Asian greens, Italian leaf broccoli (spigariello), sculpit, radicchio, purslane, chicory, Austrian winter peas, and mache**. And don't forget herbs! Easy-to-grow favorites include **thyme, chervil, sage, chives, parsley, dill, and cilantro**. With all

these choices, anyone can create a fabulous garden. And don't forget to boost the fertility of your soil with some good compost and protect your plant roots from the cold with a good layer of mulch.

Don't have a community garden space? Try growing in pots at home. Herbs, flowers, and leafy crops such as showy mustard greens, chard, lettuce, kale, and cabbages make beautiful decorative and edible displays. Be creative and grow herbs or vegetables singly or together in large pots or a variety of pots in different sizes; add some flowers such as pansies or snapdragons for a color boost. You can also incorporate edibles into your existing landscape. Below are just a few possibilities.



A combination of herbs—rosemary, thyme, parsley, and sage—makes an attractive cold-hardy arrangement in this ceramic pot. They can be grown in your garden too



Who knew lettuce was this pretty! Grow it in a big pot or a collection of smaller pots. Better yet, lettuce only needs partial shade



Brassicas are powerhouses of nutrition and beautiful too, as this kale and cabbage combination with its contrasting colors and textures demonstrates. Fill your garden or a large container and wait for the compliments



Break the typical home landscaping mold. Add a wow factor with edible plants interspersed in your current beds or in a new bed. Included here are chards, mustard greens, thyme, and kale with lettuce and parsley in the background

Whether planting in the ground or in pots, you will find that nothing tastes better or is more satisfying than food you grow yourself.

April Gordon at dr.aprilgordon@gmail.com

Welcome New Neighbors

Be sure to stop by to welcome and introduce yourself to...

Lindsey & Mick Longo
82 Ponsbury Road

Sandy Nielson
106 West Shipyard Rd

Moving Around I'On:

Deidre Fortson
281 N Shelmore Blvd

Stephanie Yarbrough
121 Jakes Lane



Communications Committee

Elaine Blaisdell-Taylor
Communications Chair

Fran Tepperman
Living In I'On Editor

Mary Kaplan
Ambassador Chair

Paula Shugart

Antonia Fokas
I'On Trust

Emily Simpson & Nina Patton
HOA Managers, Ravenel Associates



The Communications Committee wants to hear from you! Click [HERE](#) to submit your questions, comments, requests, or concerns. It's always a pleasure to hear from a Living in I'On reader!



2025 I'ON YARD SALE

Saturday, November 1 - 7:00 a.m. – 12:00 p.m.

RAIN DATE IS SATURDAY, NOVEMBER 8TH FROM 7 a.m. - 12 p.m.

The I'On Community Yard Sale is back! Please be sure to put your signs up so customers can find your home. You may set up outside your own home, in your garage and also use either Maybank Green or the Amphitheater on Westlake. Helpful information for participants:

- Be ready to go at 7AM sharp and realize that some shoppers may come earlier.
- Have spare change.

At 11:00 a.m., St Vincent de Paul has offered to have a truck at Maybank Green to collect unsold goods or anything anyone would like to donate. They need household items for the apartments and homes to offer those in need. If you have large, heavy items needing to be picked up, stop by the truck and give them your address. They are hoping to start pickup after 12:00.

PLEASE NOTE: CLOTHING WILL NOT BE ACCEPTED

ACCEPTED ITEMS:

- furniture (indoor/outdoor)
- blankets
- mattresses
- linens
- towels
- drapes
- dishes/pots and pans
- lighting/electrical
- appliances-large or small
- televisions
- artwork
- tools
- even air conditioners



*Wishing all who
celebrate, a sweet
New Year!*