



LIVING IN I'ON

It's a way of life, not just a place to call home

HELL☀️ Summer

June Events

| | | |
|-----|------|--|
| SAT | 6/1 | Ramble Playground Reserved 3 - 7 p.m. |
| SUN | 6/2 | Ramble Playground Reserved 3 - 7 p.m. |
| FRI | 6/7 | First Friday |
| SUN | 6/9 | Eastlake Athletic Field Reserved |
| MON | 6/10 | Kona Ice Truck |
| THU | 6/13 | Lunch Bunch |
| WED | 6/19 | Potluck Dinner |
| WED | 6/26 | Yarn Buddies |
| TBD | TBD | Movie Group |

Important Dates

| | | |
|-----|------|------------------------|
| THU | 6/13 | Recycling Pickup |
| TUE | 6/4 | IDC Meeting |
| TUE | 6/11 | IDC Submittal Deadline |
| SUN | 6/16 | Father's Day |
| TUE | 6/18 | IDC Meeting |
| WED | 6/19 | Juneteenth |
| THU | 6/27 | Recycling Pickup |
| TUE | 6/25 | IDC Submittal Deadline |

DOCK CLOSINGS ON PAGE 2

2024 I'On Board Meeting Dates
6:00 p.m.
Conference Room
159 Civitas Street, Suite 211

- Mon., 6/17
- Mon., 7/15
- Mon., 8/19
- Mon., 9/16
- Mon., 10/14
- Mon., 11/18
- Mon., 12/16



Protecting Bird Life at the Rookery

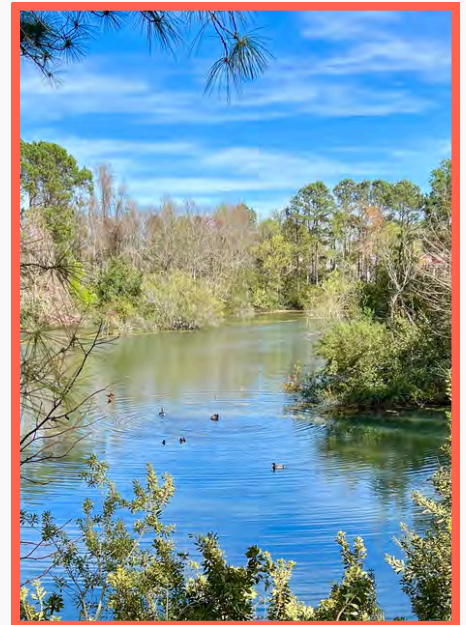
Nestled between North Shelmore, Ponsbury, Civitas, and Sowell, The Rookery is a federally protected wading bird sanctuary with restrictive covenants to protect the native bird habitats and nests.

In 2019, several long-term I'On residents expressed concerns about the loss of wading birds in The Rookery, and the I'On Assembly Board enlisted Newkirk Environmental to examine its environmental health and suggest ways to enhance the stewardship of this protected area.

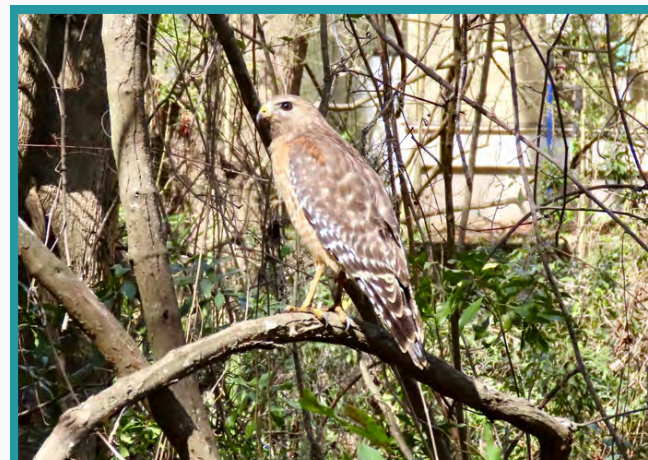
The 2019 Newkirk Environmental Report cited increased human interaction due to pedestrian traffic and off leash pets were the likely culprits causing the population shift of nesting birds.

The report also noted that the original Rookery Management Plan strictly prohibits dogs from being in The Rookery. Consequently, signage was added to clearly state dogs are not permitted in The Rookery.

Since dogs cannot read signs, eblasts, or even this article, it is important for humans who live around the Rookery and those who like to visit it to please help make The Rookery more welcoming for birds.




A bird's eye view from one of the two lookout towers at The Rookery.



A Red-shouldered hawk spotted at the Rookery, a Federally Protected wading bird sanctuary in I'On.

Continued on Page 6

For an up-to-date list of common area reservations, please visit the community calendar located on our website! <https://ioncommunity.com/calendar/>

|  | | DOCK CLOSINGS JUNE 2024 |
|---|---------------------|-------------------------|
| DATE OF EVENT | EVENT TYPE | CEREMONY TIME |
| Saturday June, 1st | Wedding & Reception | 5:25-5:55 |
| Sunday June, 2nd | Wedding & Reception | 4:55-5:25 |
| Friday June, 7th | Wedding & Reception | 4:55-5:25 |
| Saturday June, 8th | Wedding & Reception | 5:25-5:55 |
| Sunday June, 9th | Wedding & Reception | 3:55-4:25 |
| Friday June, 14th | Wedding & Reception | 5:25-5:55 |
| Saturday June, 15th | Wedding & Reception | 4:25-4:55 |
| Sunday June, 16th | Wedding & Reception | 4:55-5:25 |
| Friday June, 21st | Wedding & Reception | 4:25-4:55 |
| Saturday June, 22nd | Wedding & Reception | 4:25-4:55 |
| Sunday June, 23rd | Wedding & Reception | 4:55-5:25 |
| Friday June, 28th | Wedding & Reception | 5:25-5:55 |

FIRST FRIDAY

Friday, June 7 - 6:00 to 8:00 p.m.

HOST NEEDED



We are looking for a host for our next First Friday cocktails on June 7th. Please contact Wendy Nixon if you would like to host - she'll make it easy for you, and it's always a great night.

Many thanks to Roy and Karen Rathbun who hosted us in May - as always, a wonderful evening, thank you for your generosity.

We also have openings for June 7, August 2, September 6 and October 4. Please contact Wendy Nixon at (203) 858-7909, if you would like to host a party.

LUNCH BUNCH

Thursday, June 13 - 12:00 to 2:00 p.m.

at Beautiful South, 128 Columbus Street, Charleston



Thank you to Mary Swenson who hosted the May Lunch Bunch at Get Carried Away in Mt. Pleasant.

The next lunch event will be held at Beautiful South (<https://www.beautifulsouthchs.com/>) on Columbus St. in Charleston. The cuisine is from the south of China and has receiving excellent reviews. Some of you may be familiar with the sister restaurant, Kwei Wei, on James Island.

RSVP to Kristen Anderson at kristenande@gmail.com by Monday, June 10th.

NOTE: There is parking available across the street from the restaurant for a fee. As always, carpooling is recommended.

WOMEN'S COFFEE**See You In September!**

We will be taking a coffee break this summer. The Women's Coffee will start to brew again in September. Have a great Summer!

For further information, contact Abigail Wolitzer at abbywolitzer@yahoo.com or Farrah Follmann at ffollmann@yahoo.com.

**POTLUCK DINNER**

Wednesday, June 19th - 6:30 p.m. at the Creek Club

DINNER HOST NEEDED

Many thanks to Amy and Billy Goldy for hosting our May Potluck and Trivia Night. We had a great night, and trivia was a blast. Many thanks also to the following merchants who provided us with great prizes for our winners:

**Maddex Mercantile
Spirit of I'On
Grace Salon
Bakies
Community Table
O'Brion's**

Thank you to our Board for approving funds to pay for the Trivia host. Going forward, the Board has approved more Potluck mashups. So, if you have any great ideas, please let us know.

**Contact the office at mary.ion@ravenelassociates.com,
if you are interested in hosting. We have openings from
June through October, and December.**

After 3 and a half years, Wendy has decided it's time for a break.

Please let Tom O'Brien or the I'On office know if you would like to take over coordinating Potlucks.

YARN BUDDIES

Wednesday, June 26 - 10:00 a.m. to 12:00 p.m.

Hosted by Bebe Coyle at 213 Ponsbury Road



Bebe Coyle will be hosting Yarn Buddies at her home this month. Please let Bebe know if you are able to attend via text at (561) 371-4004 or email at bebecoyle@comcast.net.

Yarn Buddies was formed to encourage creativity, share imagination, offer assistance, and inspire those who have an interest in the handcrafted arts. Anyone interested in the creative arts of handwork, be it knitting, crocheting, needlepoint, jewelry making, quilting, rug hooking, etc., is warmly invited to attend.

I'ON WOMEN'S MOVIE GROUP

Join the E-Mail List for Coming Attractions



Hi Movie Buffs,

I continue to have difficulties finding movies that I think you will enjoy. Watch your emails for a movie invite very soon or contact me to be added to the email list - Jan Laabs (laabsjan@hotmail.com)



THIS MONTH WITH THE I'ON TRUST

End of School Year Celebration

Monday, June 10 at 3:30 on the Maybank Green

Come celebrate with an end of school year treat! Kona Ice at Maybank Green. One treat per person please.



Giving Lights Nomination Application Now Open until August 2nd!



Every year around the holidays the Trust coordinates a fundraiser called The Giving Lights of I'On. This fundraising project sells luminary kits to support a local nonprofit. It begins in November and culminates with the Holiday Festival. This year, due to a late November Thanksgiving, the Festival will take place on Sunday, December 8th, instead of the first Sunday in December.

If you are passionate about a particular local charity that addresses a basic human need and are willing to head up the volunteer effort of the fundraiser, please follow the link below to find out how you may nominate a charity. The deadline for nominations is August 2nd!

To nominate a charity click [HERE](#).

COMING Thursday, July 4th - From Morning till Night...

July 4th Parade - 9:20 a.m.

Meet at Moultrieville Road and North Shelmore

Decorate those golf carts & dress in your most patriotic attire, or wear your red, white, and blue. The most festive golf cart will win prizes! Kids, dogs, walkers, bikers, wagons, etc. are welcome. Get creative and join the fun! More details to come in the July Newsletter.

Salute at the Lake - 10:00 a.m.

Westlake Amphitheatre

Following the parade, we celebrate our country's birthday with patriotic music, the National Anthem, Pledge of Allegiance, and excerpts from the Declaration of Independence by I'On Neighbors. At the end of the salute, we award the winners of the golf cart contest!



Concert

Westlake Amphitheatre 6:00 - 9:00 p.m.

DysFUNKtion, an 8 piece powerhouse cover band comprised of professional musicians, will perform this year at Westlake Amphitheater. Bring the family, a picnic, and your dancing shoes.





MEMORIAL DAY

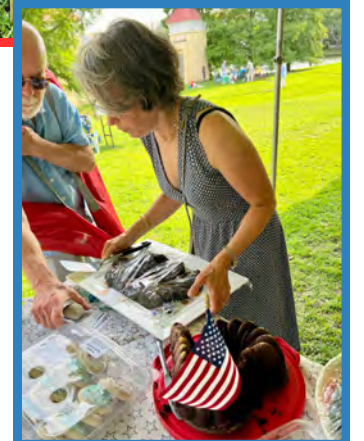
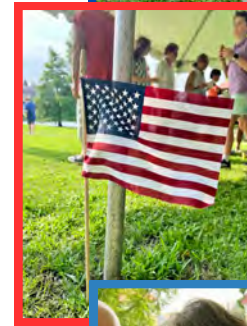
ANNUAL PICNIC IN I'ON



Memorial Day has been commemorated since the end of the Civil War and became a federal holiday in 1971. In I'On, families, friends, pets, and neighbors gathered at the annual Memorial Day Picnic to share great food, perfect weather, and community comradery.

While enjoying the day together, we paused to give thanks to the men and women of the armed forces who made the ultimate sacrifice defending our freedoms.

Thank you to Event Coordinators, Antonia Fokas and Shannon Runquist (pictured left) for a wonderful day.





Spotted at The Rookery
Black-crowned Night Heron



Yellow-bellied Sapsucker

Protecting Bird Life at The Rookery

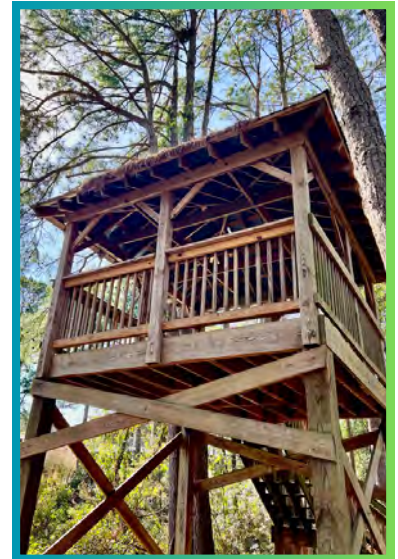
Continued from Page 1

Do your part by following these guidelines and spreading the word:

- Dogs or other pets should not be roaming or even walking on-leash through The Rookery.
- Boating or fishing is not allowed in The Rookery.
- Vegetation in The Rookery should not be pruned or removed.
- Leave no trace and take out any trash you bring into The Rookery.

With everyone’s help, The Rookery can be a beautiful and peaceful place for native, wading birds to live, play and enjoy.

If you would like to view the Newkirk Rookery Study, it can be found on the I’On Community website at www.ioncommunity.com under Document Resource Center...Board Room...Board Publications...2019 Rookery Study.



One of two observation towers at The Rookery.

I’On Community Reader Board

The community reader board, approved at the March Board meeting, was installed on Friday, May 17th. It has replaced the old I’On sign inside of the brick wall and planter in the Square’s center courtyard on North Shelmore.

Be on the lookout for important updates and upcoming events that will be posted here! Our hope is for this to be another opportunity for residents to stay informed as another level of communication outside of email blasts.



New Neighborhood Speed Humps

Have you noticed the new neighborhood Speed Humps on Eastlake?

The recently installed Speed Humps remind us to slow down to ensure the safety of other drivers, cyclists, and pedestrians. Especially now that school is out for summer!

Travel safely neighbors!

| ATLANTIC HURRICANE SEASON FORECAST | | | | | |
|--------------------------------------|--------------|------------|------------------|----------------------------------|---------------------|
| 2024 | | | | | |
| Exclusive AccuWeather Forecast | | | | | |
| | Named Storms | Hurricanes | Major Hurricanes | Accumulated Cyclone Energy (ACE) | Direct U.S. Impacts |
| Forecast 2024 | 20-25 | 8-12 | 4-7 | 175-225 | 4-6 |
| Previous Year 2023 | 19 | 7 | 3 | 145.6 | 4 |
| 30-Year Historical Average 1990-2020 | 14 | 7 | 3 | 123 | 4 |

National Hurricane Center Predicts 8-12 Hurricanes in 2024 Atlantic Hurricane Season Here's How to Prepare

June 1st marked the official start of the 2024 hurricane season. The National Oceanic and Atmospheric Administration (NOAA) is predicting a normal Atlantic hurricane season this year, with 20-25 named storms, 8-12 hurricanes and 4-7 major hurricanes.

Now is a good time to create a plan for you and your family and to review the 2024 Hurricane Guide from Charleston County. The South Carolina Emergency Management Division (SCEMD) also provides useful hurricane preparedness information on their website at www.hurricane.sc.

We also highly encourage all residents to sign up for the Town of Mount Pleasant alerts, as you will receive the most current emergency alerts and updates on topics such as trash pick-up, road closures, etc.

You can sign up for alerts by visiting the Town's website at www.tompsc.com. Hover over the "I Want To" tab, then select "Subscribe" / "Notify Me" and you can select your email preferences and sign up for their alerts.

[CLICK HERE FOR GUIDE](#)

IT TAKES A VILLAGE Reading Glasses Needed

This winter the I'On community collected reading glasses for the Zimbabwe Outreach, a 501c3 organization (<https://www.zimbabweoutreach.org>) The initial response was great with nearly 100 pair of glasses collected. Recently, those glasses were distributed to the communities of Gwayi River in Zimbabwe as residents lined up to see words in a book for the first time in a long time. The smiles and excitement from them was truly life changing. However, the response from the Gwayi River communities was so large that they ran out of glasses.



So we've been asked to collect additional glasses for another delivery in the late summer. We would be thrilled if the residents of I'On could help these villages of Zimbabwe by donating reading glasses they might not use anymore. It is amazing how such a small thing can make such a difference in the lives of these people. **You may drop off the glasses at 175 Civitas, prior to July 31. Thank you for your support, Laura Van Hove & James Mellinger**





Hello I'On Neighbors,

I'On At Home Volunteer Services...Neighbors Helping Neighbors

The sun shined on our annual Spring Fling as we joined together to honor our amazing IAH volunteers who give their time and efforts to provide a broad range of services throughout the year to help members when they need it. Here are our IAH volunteers, we thank them for being here for us.

*Barbara Adams
Rich Bennett
Barry Blackwell
Kathy Coffman
Barbara Cole
Steve Degnen
Lydia Engelhardt
Greg Ewell
Jill Ewell*

*Jennifer Falconer
Joe Fanelli
Jim Feehan
Craig Ferrer
Karen Fisher
Barbara Fowler
Kathie Haas
Bob Hardie
Becky Head*

*Jim Head
Peg Higgins
Mary Kaplan
Cathy Mooney
David Mylrea
Anne Register
Harriet Ripinsky
Amy Sage*

*Anne Spees
Arlyn Stoy
Brenda Uttaro
Becky Van Wie
Fred White
Rob Wieboldt
Don Wilbur
Mary Wilbur*



We also thanked Mary Holtz for keeping IAH running so well over the past three years. Her hard work and spirit will be missed and we're hoping to see her at upcoming IAH events.

We are very fortunate to welcome Elizabeth Sage as the new Administrative Manager and it's great that Mary and Elizabeth will be collaborating for a smooth transition.

Over 55, I'On At Home is for you!

Join us and become a part of a lively group of neighbors interested in learning new things, sharing cultural and social activities and helping each other.

Contact Mary Holtz, IAH Administrative Manager: maryh@ionathome.org or visit us at: <https://ionathome.helpfulvillage.com/>

I'ON COMMUNITY GARDEN

The Community Garden Transitions from Spring to Summer



After producing abundant salads, this lettuce has bolted and is too bitter to eat. However, the kale behind the lettuce is still good to eat in a delicious kale salad.

The Spring garden has delivered an abundance of lettuce, brassicas such as kale and mustard greens, peas, and other cool-weather crops. With the onset of warmer weather and longer days, however, many of these have succumbed to the heat, been harvested, or have bolted (gone to seed).

Now some of the crops of Summer are beginning to fill the void. With good planning, crops can be sequentially planted to keep the bounty going indefinitely. For instance, tomatoes, cucumbers, and squash were planted earlier in the Spring and are beginning to set fruit, ripen, and are even being harvested.



In another couple of days this yellow crookneck squash will be ready to pick.



Some of these tomatoes are at peak ripeness for fresh eating with many more to follow.

Once these crops are no longer producing, plants such as okra, eggplant, melons, and peppers that thrive more in the hot and humid Summer months can replace them and remain productive most of the rest of the summer.

Adding variety over the Summer are non-vegetable crops such as blueberries and strawberries, herbs, and flowers. With so many planting options and year round growing conditions, our I'On Community Garden is a place where everyone can experiment and find something they love to grow.

April Grodon - dr.aprilgordon@gmail.com

Along with a variety of vegetables, herbs, and flowers, this garden has ripening blueberries.



Some gardeners prefer to plant only flowers such as these gorgeous dahlias. A treat for the eyes!



BUTTERFLY GARDEN

Beginning in June, the I'On Butterfly Garden Comes Alive



Eleanor Neal carefully releases this cage-raised American Lady butterfly near the Stokes asters in the butterfly garden

Beginning in June, the I'On Butterfly Garden comes alive as more nectar-rich flowers are blooming to attract hungry butterflies and the green leaves of their host plants are now available for their caterpillars. As though on cue, migratory butterflies like the Monarch are completing their journeys from winter sanctuaries farther south, and butterflies such as swallowtails that overwinter as pupae or chrysalises have emerged. All are eager to begin their lives in habitats, such as our garden, that provide the resources they need to survive and flourish. Their numbers and variety will increase over the course of the summer months ahead.

Earlier in the Spring visitors to the garden frequently expressed their delight at seeing the occasional butterfly, but they keep returning to the garden in anticipation of more future sightings. The fascination with butterflies is not hard to understand. There is something magical about butterflies that appeals to all ages: their beauty, gentleness, and graceful flight from flower to flower are a major source of their charm. In many cultures butterflies are also symbols of freedom, hope, and transformation due to the mystery of their metamorphosis from egg to caterpillar to chrysalis and finally to a fully formed butterfly.

The process is awesome to observe, and many children in their schools are now raising butterflies in cages and then releasing them once they can fly; sometimes they bring them to our garden. Recently the daughter of one of my fellow community gardeners released an American Lady butterfly. Note how tenderly she holds the delicate butterfly in her hand in the photo below. A different American Lady recently observed at the garden is shown in a following photo to give a closeup view of this beautiful butterfly.

Several other notable butterflies have been observed lately at the garden. Monarchs have been around since March, and their numbers will be increasing in part because of the many milkweed plants we grow for them (their only host plant). Others include the Gulf Fritillary, which we don't usually see until later in the summer, and the gorgeous Tiger Swallowtail.



An American Lady butterfly sips nectar from a Marguerite daisy



With more flowers blooming and more butterflies arriving in June and throughout the summer, come by the garden often. There is always something new to see.



April Gordon - dr.aprilgordon@gmail.com

A Gulf Fritillary makes an earlier than usual appearance at the garden

It was a real treat to see this Tiger Swallowtail at the garden enjoying the freshly blooming zinnias



Welcome New Neighbors

A big welcome to the newest I'On neighbors! Make sure to stop by and introduce yourself to...

Anne & Rusty Bennett
153 Ponsbury Road

Toni Lee
178 Lonsborough Street

Kimberly & John Mack
54 Sanibel Street

Thomas & Pamela Surtevant
73 Sowell Street

Linda & Laurence Ulvey
138 Lonsborough Street

Moving Around I'On

Scott & Cynthia Demler
30 Jogging Street

Communications Committee

Julie Hussey
Communications Chair

Fran Tepperman
Living In I'On Editor

Mary Kaplan
Ambassador Chair

Kathie Haas
Paula Shugart

Antonia Fokas
I'On Trust

Mary James & Emily Simpson
HOA Managers, Ravenel Associates



The Communications Committee wants to hear from you! Click [HERE](#) to submit your questions, comments, requests, or concerns.

It's always a pleasure to hear from a Living in I'On reader!

I'On Construction and Landscape Hours

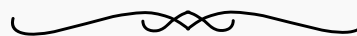
The first official day of summer is almost here! Now that schools are out and the weather is warming up and gatherings are being held outside, we wanted to take a moment to remind residents of the construction hours policy.

This policy also pertains to landscaping companies. It is the owners responsibility to notify their landscaping company and contractors of this policy.



- Monday - Friday: 7:30 am – 6:00 pm
- Saturday: 8:30 am – 4:00 pm
- Sunday: 1:00 pm – 4:00 pm

****No work is permitted on Federal holidays****



Are You Receiving Email Blasts?

It has been brought to our attention that due to an email address change within Constant Contact, a few neighbors are not receiving email blasts.

If you have not received a blast in some time or if you have yet to sign up to receive them, please contact Mary James in the office at mary.ion@ravenelassociates.com.

Email blasts are an excellent communication tool to keep you up to date with I'On happenings.