

LIVING IN I'ON

It's a way of life, not just a place to call home



April Events

Sat 4/1	I'On Blood Drive
Sat 4/1	After Bridge Run Concert
Fri 4/7	First Friday
Sat 4/8	Egg Hunt
Tue 4/11	Women's Coffee
Wed 4/19	Potluck Dinner
Thu 4/20	Lunch Bunch
Wed 4/26	Yarn Buddies

Important Dates

Sat 4/1	April Fool's Day
Tue 4/4	IDC Meeting
Wed 4/5	Passover
Thu 4/6	Recycling Pickup
Thu 4/6	Full Pink Moon
Sun 4/9	Easter
Tue 4/11	IDC Submittal Deadline
Tue 4/18	IDC Meeting
Thu 4/20	Recycling Pickup
Sat 4/22	Earth Day

Creek Club Dock Closures

Sat 4/1	4:55 - 5:25 p.m.
Sun 4/2	4:55 - 5:25 p.m.
Sat 4/8	3:55 - 4:25 p.m.
Fri 4/14	5:25 - 5:55 p.m.
Sat 4/15	4:55 - 5:25 p.m.
Sun 4/16	4:55 - 5:25 p.m.
Fri 4/21	5:25 - 5:55 p.m.
Sat 4/22	5:25 - 5:55 p.m.
Sun 4/23	4:25 - 4:55 p.m.
Fri 4/28	5:25 - 5:55 p.m.
Sat 4/29	4:55 - 5:25 p.m.
Sun 4/30	3:55 - 4:25 p.m.

**I'On Board Meeting
at 6:00 p.m.**

Mon 4/17



Spring has Sprung!

Spring has sprung in I'On and Earth Day approaches. Nature in all its forms are on full display in our community and within the pages of this Newsletter.

One of the best spots to take a stroll and enjoy all that I'On has to offer is the Rookery. Peruse wildlife, enjoy stunning vistas, and stop to sit upon a swing in one of two observation towers.

The Rookery has entrances on N. Shelmore Blvd, Jakes Lane, and the alley behind Sowell Street opposite Patty Lane.

According to the welcoming signs that await visitors, the pond was originally dug to provide soil for nearby road construction projects. After its excavation, the empty hole gradually filled with spring water. Soon trees grew along the banks of the new pond, and grasses and wetland shrubs sprouted on some of the shallow islands. Eventually, the area was discovered by wading birds, and in 1994 egrets and herons began nesting.



A red shouldered hawk spotted in the Rookery in late March. Often heard before it is seen, the clear whistled calls of this hawk are conspicuous, especially in spring.



A heartfelt view from an observation tower at The Rookery.

The Rookery is open to all those who are respectful of the place and its inhabitants, be they flowered, furred, or feathered.

When visiting, please keep your voices low and do not make loud noises. There is no fishing or swimming in the pond, no pets are allowed, and do not pick the wildflowers.

Closed from sunset to sunrise, the Rookery is a serene place to respect and commune with nature.

Additional photos taken on the I'On Rookery trail appear on page 9.

FIRST FRIDAY**Friday, April 7 - 6:00 to 8:00 p.m.****Hosted by Lee Payne at 23 Mises Street**

Many thanks to Suzanne Leonard for hosting us in March in her stunning home. Everyone had a great night. Our next First Friday cocktails will be on Friday, April 7 from 6:00 to 8:00 p.m., graciously hosted by Lee Payne at 23 Mises. No need to RSVP, just please remember to bring your own libations, drinking glasses and a small appetizer to share.

We still have openings for June, July, September, October, and November. Please contact Wendy Nixon at (203) 858-7909 if you would like to host a party. Our committee will make it easy. Best, Wendy Nixon, Dawn Beaver and Carter Ward, Your FF coordinators.

WOMEN'S COFFEE**Tuesday, April 11 - 10:00 a.m. to 12:00 p.m.****Hosted by Harriet Ripinsky with assistance from Linda Hanson at 79 Moultrieville Road**

Please bring a cup for coffee or tea. As a courtesy to the hostess and others, we ask that all guests be vaccinated with boosters. No RSVP needed. Contact coordinators Joyce Stifel (574) 276-5000 or Susan Fitzgerald (703) 402-3298 for further information. The coffees are sponsored by the I'ON Trust.

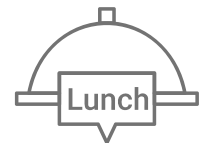
POTLUCK DINNER**Wednesday, April 19 - 6:30 p.m. at the Creek Club****Hosted by Susan Fitzgerald**

Many thanks to Amy Hicks and Michelle McQuillan for hosting our March potluck. We had a great crowd and a beautiful sunset! Thank you to Susan Fitzgerald for hosting this upcoming Potluck. It is a great time to get out and socialize with your neighbors. Hope you'll join us this month.

Come celebrate with your neighbors and join us for a delightful evening overlooking Hobcaw Creek and the marsh! Plan to arrive at 6:30 and bring a dish to share, along with your own plate, utensils, a beverage and glass. There are no rules that you must personally cook what you bring.

Please encourage new neighbors to join us. Potluck is a great opportunity to make new friends and catch up on neighborhood news. Don't be shy or hesitate to arrive solo! You will find dinner partners aplenty once you arrive.

Would you like to host? We have openings for July, August, and November 2023. Let Wendy know at (203) 858-7909. Best, Wendy Nixon, Lendy Barnard, Amy Goldy and Carline Soutter, your Potluck Committee.

LUNCH BUNCH**Thursday, April 20 - 12:00 to 2:00 p.m.****Hosted by Karen Rathbun at Graze, 863 Houston Northcutt Blvd. (Whole Foods Shopping Center)**

Many thanks to Cathy Mooney who hosted the March event at Mustard Seed. We had a great turnout and a delicious meal.

If you plan to join us for lunch this month, please RSVP to our host Karen Rathbun via email at Karenrschome@gmail.com or send a text message to (973) 985-7983 by April 17th. If you need to cancel please let Karen know asap. Seating is limited and sometimes it is hard to accommodate last-minute drop-ins.

We are looking for hosts for July and August. Hosting is easy! You just need to pick one of your favorite restaurants and collect the RSVPs. Questions? Contact Kristen Anderson at kristenande@gmail.com.

YARN BUDDIES

Wednesday, April 26 - 10:00 a.m. to 12:00 p.m.

Hosted by Susan Fitzgerald at 185 N. Shelmore Blvd.



Don't let the name fool you! Yarn Buddies was designed for those who want to encourage and share their imagination, inspiration, and creativity in the handcrafted arts. Anyone interested in the creative arts of handwork is warmly invited to attend. Knitting, crocheting, needlepoint, beading, quilting, rug hooking, paper-folding arts, are just some of the activities undertaken.

This month's meeting is hosted by Susan Fitzgerald at her home, 185 N. Shelmore, from 10 a.m. to 12 p.m. Please RSVP to Susan at: susaniveyfitzgerald@gmail.com or text: (703) 402-3298

I'ON WOMEN'S MOVIE GROUP...

COMING SOON: "The Book Club - The Next Chapter"...



As you may have noticed the movie selection at movie theaters these days isn't as good as it used to be. In the past I have always picked a date so you could put it on the calendar, but lately it has been difficult to find a good movie choice. Because of this, I've decided to tell you the movie title and when it actually makes it to the big screen, I'll send all the ladies on my email list the date, time, etc. for that movie. Hopefully this will enable us to see movies that we all will enjoy.

Our next movie will be "The Book Club - The Next Chapter." A few years ago we went to see "The Book Club" with Diane Keaton, Jane Fonda, Mary Steenburgen, and Candice Bergen. This movie has the same actresses in it. It is expected to open on Mother's Day. So watch for an evite near that date.

If you are not on the email list please write me at laabsjan@hotmail.com and I will add you to the list to receive an evite for the upcoming movie night. See you at the movies, Jan Laabs



GOT TALENT?

WE NEED YOU!

The Trust would like to host an open mic event during the Memorial Day Picnic. If you would like to participate, please fill out the provided google form by clicking [HERE](#). Forms must be submitted by April 30th to qualify. The Trust will provide the microphone and PA system.



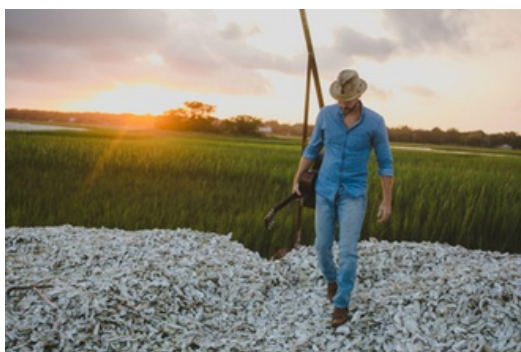
THIS MONTH WITH THE I'ON TRUST

I'On Blood Drive with the Blood Connection
Saturday, April 1 - 10:00 a.m. to 3:00 p.m.
Parking Lot Behind the Square Onion



Come save a life with the Blood Connection! All donors will receive a \$20 eGift card PLUS a bonus \$10 eGift card! Schedule your appointment by clicking [HERE](#) or by entering the Sponsor Code: 2726.

After The Bridge Run Concert
Saturday, April 1 - 4:00 to 6:00 p.m. at the Westlake Amphitheater



Featuring Charleston's own, Gritty Flyright. Gather your picnic supplies and join us for a fun and relaxing afternoon with great music and friends! This event is free and family-friendly. For more information visit www.grittyflyright.com. This is a BYOB event for those 21+.



Egg Hunt
Saturday, April 8 - 9:30 a.m. on the Maybank Green



The littlest I'On residents, ages 1-3 and 4-8 years, are invited to meet the Easter Bunny and collect eggs on Maybank Green. Be on time because the "hunt" goes very quickly.

If your children will be participating, please help us by taking 12 plastic eggs, stuffed with candy, to the home of Shelley Scott at 55 Frogmore Road by Friday, April 7th at 5 p.m. Please leave the eggs on the front porch. The Trust will have some stuffed eggs but we want to make certain there are plenty of eggs for the "hunt".

For questions or additional information, visit www.iontrust.org or email admin@iontrust.org.



Coming in May...

Grub on the Green
Friday, May 5th - 5:00 p.m. to 8:00 p.m. on the Maybank Green

Grub on the Green is back! Let the Trust handle Friday night dinner! Join us on the Maybank Green for food trucks and fun! Grab your neighbors, a blanket, and some food to enjoy. This is a BYOB event for those 21+.

Memorial Day Picnic
Monday, May 29 - 5:00 p.m. to 7:00 p.m. at the Westlake Amphitheater

The Trust is providing fried chicken, lemonade, paper goods and utensils. Tables will be available for your dishes to share.



NATIVE PLANTS BEAUTIFY OUR COMMUNITY AND BENEFIT OUR ENVIROMENT

By Becky Van Wie

This lovely spring weather has many of us thinking about planting in our yards (or “gardens,” as we say in Charleston). The I’On Eco Group (IEG) wants to encourage you to consider native plants for the multiple benefits they offer.

According to the nonprofit organization Plant Native’s website, native plants are good for both the environment and our economy. They not only provide food and shelter to our wildlife, but they are affordable. These flowers, shrubs, and trees remove pollutants from the air and filter water, while also helping to regulate the climate by dissipating heat. The more than 1,000 species native to South Carolina are also often more resilient to pests (<https://plantnative.org/south-carolina-native-plants-for-landscaping-with-pictures.htm>).



Bottlebrush Buckeye



Coastal Leucothoe

Our neighbors on Kiawah Island have a very good database of Lowcountry native plants, which they have encouraged us to use. It’s a great list of plants, from ferns and vines to trees and every type of vegetation in between, and it’s searchable (<https://www.kiawahisland.org/native-plant-database>).

A good resource for more information is the Clemson Cooperative Extension (<https://hgic.clemson.edu/factsheet/an-introduction-to-native-plants-for-sc-landscapes/>). There you will find the benefits and types of native plants in addition to photos of various species and a calendar of when to plant what.

One of the best local sources for native plants is Roots and Shoots (<https://rootsandshootsnursery.com/>). In addition to plants, they offer tools and gifts, soils and amendments, and plenty of good advice.

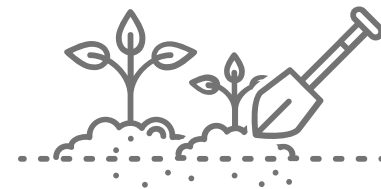
So, as you’re planning your spring, summer, and year-around landscape, please consider making native plants your top priority.
Add a little bit of body text



Inkberry Holly

**I’On Eco Group: Preserving I’On’s beauty through sound environmental practices.
For further information, please contact Carol Degnen at cdegnen@gmail.com**

I'ON COMMUNITY GARDEN



A group of gardeners shared ideas at the community garden opening on Saturday, March 4th.

Community Garden 2023 Opening

by Dr. April Gordon

It was a beautiful afternoon on March 4 when community gardeners gathered for the opening of the garden. New and returning gardeners got acquainted and engaged in animated discussions about the upcoming planting season. Clemson Extension Agent Chris Burt was on hand to advise us on how best to take care of our soil and what varieties of plants and gardening practices will help to ensure the best results.

Many gardens are now planted, but some gardeners are waiting for the warmer weather of April to get their seeds and transplants in the ground. Since we can grow year-round, several gardens were started in the Fall and are still producing cool-weather crops such as cilantro, parsley, kale, mustard greens, lettuce, and chard. A special treat is overwintering strawberries that are just beginning to produce berries. Other gardeners have jumped into the spring season and are growing a mix of cool weather crops such as lettuce and warm weather tomatoes, peppers, and basil.



A variety of kale, lettuce, and herbs continue to thrive since the Fall in this garden.

With the unpredictable weather of March hopefully behind us, the April garden will be filled with additional summer crops such as beans, eggplant, okra, flowers, and cucumbers. Whatever the season, there is always delicious fresh produce and lovely flowers to keep a gardener happy.



In this garden, spring lettuces and parsley have been planted with summer tomatoes, peppers, eggplant, and basil



Strawberries survive all year and are just beginning to produce berries.

**If you missed your chance earlier to get a garden plot, a few are still available.
To find out how you can get started growing your own garden,
contact April Gordon (dr.aprilgordon@gmail.com)**

BUTTERFLY GARDEN

It's a Happy Sight as Spring Flowers Emerge in Growing Numbers in the Butterfly Garden

by Dr. April Gordon



There are always a few flowers blooming in early March in the Butterfly Garden but beginning in late March and moving into April, as the days lengthen and become warmer, the garden really begins to come alive. Walking around the garden, it is such a pleasure to see all the plants turning green and colorful flowers beginning to bloom. It is heartening to know that it will not be long before the butterflies, bees, and other garden life will be returning as well.



The Stokes Aster is one of the most beautiful native Spring flowers

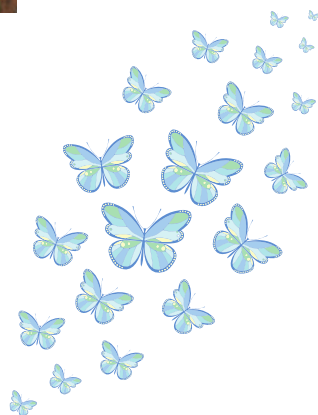
Below are some of the flowers to see now at the garden. As we move through April far more plants will fill the garden with their beauty for all of us to enjoy. Visit often and see the transformation. Realize as well that flowers such as these (mostly native plants) are more than pretty; they are essential to the survival of many insects, birds, and other living things.



Native Flame and Piedmont Azaleas are spectacular early blooming shrubs



Pollinating flies are among the insects attracted to the sunny native Coreopsis flower



The eye-catching Scarlet Salvia provides color through the garden season

For more information on the Butterfly Garden and native plants, contact April Gordon at dr.aprilgordon@gmail.com.



Ciao I'On Amici,

March Madness ends soon, but I'On At Home's Bocce Madness is just getting started. We're celebrating Spring by playing in one of IAH's 3 Bocce groups and joining our friends in one of the oldest games on earth.

Bocce was first documented in 5200 B.C. in an Egyptian tomb painting of two boys playing the game. It has evolved over the centuries in Roman, Greek and Italian cultures and was played everywhere, from the churches and castles to the city streets.

Today, it is an Olympic sport and because of its versatility – enjoyable at virtually any age, athletic ability, and location – bocce has become the third most played sport in the world.

No skill necessary, Italian Riviera style clothing optional and a BIG sense of humor a definite plus!



The name says it all!



It's a guy thing



And our newest group

To learn more about I'On At Home: Contact Mary Holtz, IAH Administrative Manager:
maryh@ionathome.org or visit us at: <https://ionathome.helpfulvillage.com>



Communications Committee

Michael Spalding
Communications Chair

Fran Tepperman
Living In I'On Editor

Mary Kaplan
Ambassador Chair

Kathie Haas
Danielle Marin

Kat Harberg & Antonia Fokas
I'On Trust

Mary James & Emily Simpson
HOA Managers, Ravenel Associates



The Communications Committee wants to hear from you! Click [HERE](#) to submit your questions, comments, requests, or concerns. It's always a pleasure to hear from a Living in I'On reader!

A Note from the I'On Assembly

Please be aware, if you unsubscribe from email blasts, you will no longer receive notifications from the HOA or the I'On Trust.

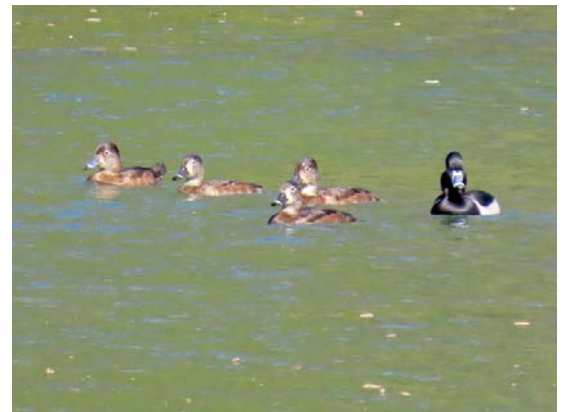


It will take you approximately 1,300 steps and 13 minutes to walk the 0.66 mile trail through the Rookery.



One of two observation towers that provide sweeping views of life along the Rookery trail.

Pictured living on the pond are Ring-necked ducks, one male in black and four females in brown. A strong and fast flier, the species are able to take flight by springing up directly from the water, without the laborious take-off run of most diving ducks.



A view from one of the observation towers. Trees grow along the banks of the pond, and grasses and wetland shrubs sprout on some of the shallow islands.