

LIVING IN I'ON

It's a way of life, not just a place to call home

You're Invited

- 2/1 First Friday Cocktails
- 2/12 Women's Coffee
- 2/13 Women's Lunch Bunch
- 2/20 Potluck Dinner
- 2/24 Oyster Roast
- 2/27 Ladies' Movie Group
- 2/27 Yarn Buddies

Other Important Dates

- 2/2 Mathis Ferry Trash Pickup
- 2/5 IDC Review
- 2/14 Recycling Pickup
- 2/16 I'On Garden Opening
- 2/18 Board Meeting
- 2/19 IDC Review
- 2/28 Recycling Pickup

Creek Club Dock Closures

- 2/2 4:25 - 4:55pm
- 2/9 4:55 - 5:25pm
- 2/16 4:55 - 5:25pm
- 2/17 4:55 - 5:25pm
- 2/22 5:25 - 5:55pm
- 2/23 3:25 - 3:55pm
- 2/24 11:55am - 12:25pm



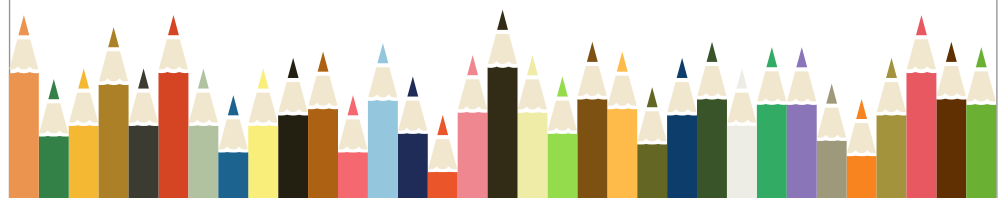
A Letter From the I'On Trust Board of Directors

As we begin this year, we extend appreciation to our outgoing board member Joan Zaleski. Joan has been on The Trust Board of Directors since 2016 and served as Secretary the past two years. Her energy and enthusiasm will be missed. We are so grateful for her commitment to the Trust's mission of bringing neighbors together and making I'On such a wonderful, fun place to live.

We would also like to thank the rest of our 2018 Board: Jodie Cochran, Heather Emrich, Lydia Engelhardt, Megan Farr, Antonia Fokas, Annie Henderson, Brooke Niznik, and Lauren Smith for making 2018 such a terrific year of events and activities (despite the rain). We are delighted to announce that Lydia Engelhardt will continue to serve as President of The Trust with Annie Henderson and Brooke Niznik continuing their roles as Vice President and Treasurer, respectively.

Additionally, we are thrilled that Shannon Runquist has joined The Trust Board of Directors as a new member this January 2019.

Thank you all for volunteering your time to the Trust and your neighbors - we are lucky to have you!





Keep Your Eye On...

The 2019 HOA board members!

On January 28th at the annual meeting the HOA board for 2019 was elected. Please welcome back Johann von Asten, Chris Colen, Trey Mathisen, and Tom O'Brien. And give a warm greeting to the newest members Julie Hussey, Eric Krawcheck, and Peter Wallace.

A big thank you to the outgoing board members, Lori Bate, Michael Purcell, and Jody McAuley. Their contribution and dedication to the board and I'On is greatly appreciated!

Adopt-A-Highway

Saturday, February 2, 9:00am
Meet at Obrion's In The Square

Did you know I'On is part of the Adopt-A-Highway program? And students can earn community service/volunteer hours! Just bring your papers for Rob Wieboldt to sign. Volunteers will be supplied with gloves, bags, "grabbers" and reflective vests.

All volunteers must be 13 years of age or older and sign a SCDOT Waiver beforehand. Minors must have their parent's signature in advance. Contact [Rob](#) for more information.

Street Signs

The I'On Trust still has street signs available for purchase. They are \$40 each and proceeds support Hurricane Relief at [One SC Fund](#). Click [here](#) to order yours!

You're Invited...



...First Friday Cocktails

Friday, February 1, 6:00 - 8:00pm
59 Roberts Mill Circle, Hosted by Karen and Bill McLean
For I'on residents, their family, friends, and guests!
Please bring an appetizer to share, a choice of beverage, and your own glass!
For questions or to host contact [Kathy Chambers](#), 843-469-8432 or [Karen Rathbun](#), 843-936-6590

...Oyster Roast - more details on page 4

Sunday, February 24, 3:00 - 5:30pm
Westlake Amphitheater
Hosted by I'On Trust
Purchase tickets [here](#) by February 13

Tickets are \$25 per adult and \$5 per child 5 and over. Children under the age of 5 eat free! After February 13 the adult ticket price jumps to \$30 (child tickets will remain \$5). This event is BYOB for those aged 21 and over.

...Ladies' Movie Group

Wednesday, February 27

Go for a late afternoon movie followed by a stop at a local gathering place for drinks and a bite to eat! An informational e-mail will be sent out the weekend before.

Not on the e-mail list? Contact [Jan Laabs](#) to be added!

...Potluck Dinner

Wednesday, February 20, 6:30pm
Creek Club, Hosted by Eileen and Wes Moore
Bring a dish (with serving utensil) to share, plus your own plate, utensils, and beverage. You do not have to cook what you bring, just grab a yummy dish from one of the many great local options!
For more information contact [Lydia Engelhardt](#) or call, 843-884-8400.

...Women's Coffee

Wednesday, February 12, 10:00am - 12:00pm
786 Lowcountry Boulevard, Hosted by Vickie Suazo
Women's Coffee is sponsored by I'On Trust and is coordinated by [Nance Nixon](#), 908-507-6680 and [Eileen Moore](#), 571-723-9733. For more information contact Nance or Eileen.

...Women's Lunch Bunch - more details on page 4

Wednesday, February 13, 12:00pm
Laura Alberts, 891 Island Park Drive, Daniel Island
Hosted by Debbie Ferrer and Margie Bondy
RSVP by February 7 to [Debbie Ferrer](#), 203-273-7735
Seating is limited to 16 guests maximum

...Yarn Buddies

Wednesday, February 27, 10:00am - 12:00pm
324 North Shelmore Boulevard, Hosted by Kathy Coffman
If you have an interest in hand needlework - crocheting, needlepoint, rug hooking, even jewelry-making, then you need to be at Yarn Buddies! They share ideas and tips, offer assistance, and have lots of fun conversation!
E-mail [Delores Rosebrock](#) for more information.



I'On Design Committee

Preserving the look of I'On

Prior to beginning any new construction or landscaping project, please contact the Neighborhood Coordinator [Pam Gabriel](#), 843-606-6366, to get the information needed to expedite the review process. Pam's office hours are Monday through Friday, 11:00am - 3:00pm.

All projects **must have written IDC approval and permit prior to starting any work**. Failure to do so could result in delays and possible sanctions for non-compliance.

IDC Dates To Remember

The IDC meets the first and third Tuesday of each month.

Tuesday, February 5
Tuesday, February 19

Click [here](#) to visit the I'On Design Committee page and click [here](#) to view a full copy of the Covenants, Conditions, Restrictions, and Rules.



Do you have a new neighbor?! Introduce yourself and then reach out to the

I'On Ambassador Coordinator, [Mary Kaplan](#), 843-388-4489. We want all our new neighbors to be greeted as soon as possible!

This Month With I'On's Design Committee

Talking Trash!

Let's be honest...no one wants to see your trash and recycle bins. You don't even want to see them!

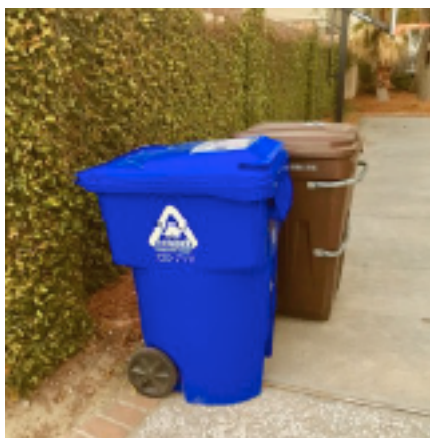
As a matter of fact, as an I'On home owner you are required to screen your bins from public view. Here is a excerpt from I'On's Covenants, Conditions, Restrictions, and Rules that you agreed to when you bought your property:

D-104 Trash and Refuse.

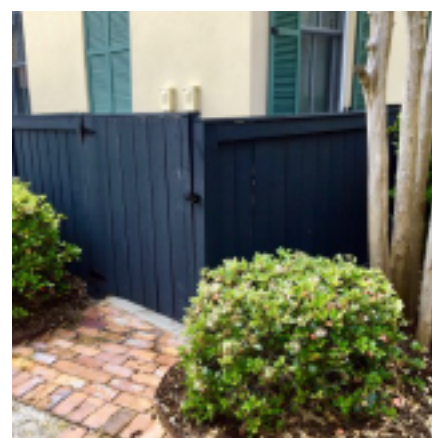
Trash and refuse containers shall be stored inside of the dwelling or garage on a lot or otherwise at the rear or side of the lot and adequately screened with architectural and/or landscape elements in a manner approved pursuant to Article IV of the Declaration.

So, if your trash and recycle bins are hanging out in public view, roll them back into your garage, screen them behind shrubs, or build an enclosure. Your neighbors will appreciate it and the neighborhood will look much better!

Remember to contact the IDC if you plan to add screening, landscape, or build an enclosure. We can help you make the right decisions.



Not correct



Yeah, that's much better!

New Neighbors

A big welcome to our newest I'On families. Make sure to stop by, say hello, and invite them to our fabulous community events!

- Betsy and Ted Davis, 62 Hopetown Road
- McKenzie and Peter Johnstone, 82 N Shelmore Boulevard
- Christine and Richard Luesebrink, 51 Sowell Street
- Clint Struthers and Becky Youle, 51 Jogging Street
- Josie Wood, 15 Faye Lane

*Be the rainbow
in someone else's
cloud.*

- Maya Angelou



...Continued from Page 2

I'On Trust Oyster Roast

Come enjoy some great food and music. John Catlette will be entertaining us with his lively music and Crazy Dutchman Catering will be providing a delicious lineup of foods...all you can eat oysters and a buffet of cider pulled bbq with two sauces, buns, pimiento mac n' cheese (non pimiento for the kids), vidalia onion slaw, and fresh baked cornbread muffins - yum!

Don't forget to purchase your tickets [here](#) before February 13th. Before the price goes up!

Women's Lunch Bunch

Laura Alberts features fresh local dishes from soup and salad to mediterranean chicken pasta and jumbo lump crab cakes and more!

Driving Directions:

- 17N to I-526W
- Take Exit 24 for Daniel Island
- Proceed .5 miles and turn right on Island Park Drive
- After .4 miles restaurant is on the right
- Parking is available behind the restaurant

Questions or Comments?

We want to hear from you! Click [here](#) to submit your questions, comments, or requests to submit information to be published in next month's edition of Living In I'On.

I'On's Community Garden

Welcome 2019 Community Gardeners

This marks the 10th year of the I'On Community Garden. A warm welcome to the newest members and all returning gardeners! The garden is being prepared for spring planting and will be ready mid-February. There has been an enthusiastic response to the opportunity for space in the community garden. Most garden plots were gone in the first week! Don't worry, there are still three plots available. If you're interested in one, email [April Gordon](#), I'On Community Garden Coordinator.



The grand Garden Opening will be on Saturday, February 16 at 10:00am. All are invited to come by and visit with the community gardeners, share ideas, discuss plans for garden activities, walk through the garden plots, relax on a bench, enjoy the beauty, and say hello to your I'On neighbors.

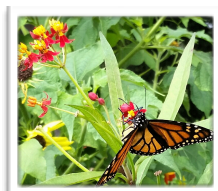
Gardening at Home

- *Basil 'Genovese'*: the "classic" Italian basil for cooking
- *Cucumbers*: choose from an array of minis, slicers, picklers, and specialty cucumbers
- *Jelly Bean*: sweet, small grape tomatoes with a burst of flavor
- *Marigold 'Queen Sophia'*: pretty red and gold flowers
- *Mexican Sunflower 'Torch'*: prolific bloomer with bright orange flowers lasting until frost
- *Salvia 'Coral Nymph'*: sweet peach colored flowers bring hummingbirds, bees, and butterflies to your garden
- *Sun Gold*: delicious, bright orange cherry tomatoes
- *Squash*: crookneck, straight, zucchini or scallops – all start easily from seed

For all I'On residents who are planning a new garden, here's a handy link to [Clemson's Cooperative Extension Home and Garden Information Center](#)

Don't forget to get a soil test and amend your soil for the best results.

Tropical Milkweed A Hazard To Monarch Butterflies



Most of us are aware of the threat to Monarch survival due to habitat destruction, pesticides, and loss of milkweed - the host plant essential to Monarch reproduction. Many conscientious citizens have responded by planting tropical milkweed (*A. curassavica*) in their gardens. However, there is growing concern that tropical milkweed can be hazardous to Monarchs. To avoid these hazards, grow native milkweeds such as butterfly weed (*A. tuberosa*) or swamp milkweed (*A. incarnata*). Visit [Xerces Society for Invertebrate Conservation](#) to learn more.

Questions about Monarchs and milkweed? Contact [April Gordon](#) for more information.

I'On Communications Committee

Chris Colen, Communications Chair
 Mary Fraser, Southern Community Services
 Mary Kaplan

Jessica Gosnell
 Meegan Graham
 Leah Simmons, Living In I'On Editor
 Margaret Summers