

NOTES / SITE INFORMATION

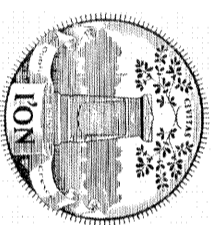
1. THE OWNER IS: SEAMON, WHITESIDE & ASSOCIATES, INC. 1500 CHINA STREET, MOUNT PLEASANT, SC 29544. PHONE 803-884-6677. FAX 803-884-6678.
2. WATER AND SEWER SERVICE TO THE ION SUBDIVISION SHALL BE PROVIDED BY THE ION COMPANY. THE ION COMPANY HAS BEEN AWARDED A CONTRACT BY THE ION COMPANY FOR THE ION SUBDIVISION. THE ION COMPANY HAS BEEN AWARDED A CONTRACT BY THE ION COMPANY FOR THE ION SUBDIVISION. THE ION COMPANY HAS BEEN AWARDED A CONTRACT BY THE ION COMPANY FOR THE ION SUBDIVISION.
3. THE ION COMPANY HAS BEEN AWARDED A CONTRACT BY THE ION COMPANY FOR THE ION SUBDIVISION. THE ION COMPANY HAS BEEN AWARDED A CONTRACT BY THE ION COMPANY FOR THE ION SUBDIVISION. THE ION COMPANY HAS BEEN AWARDED A CONTRACT BY THE ION COMPANY FOR THE ION SUBDIVISION.
4. THE ION COMPANY HAS BEEN AWARDED A CONTRACT BY THE ION COMPANY FOR THE ION SUBDIVISION. THE ION COMPANY HAS BEEN AWARDED A CONTRACT BY THE ION COMPANY FOR THE ION SUBDIVISION. THE ION COMPANY HAS BEEN AWARDED A CONTRACT BY THE ION COMPANY FOR THE ION SUBDIVISION.
5. THE ION COMPANY HAS BEEN AWARDED A CONTRACT BY THE ION COMPANY FOR THE ION SUBDIVISION. THE ION COMPANY HAS BEEN AWARDED A CONTRACT BY THE ION COMPANY FOR THE ION SUBDIVISION. THE ION COMPANY HAS BEEN AWARDED A CONTRACT BY THE ION COMPANY FOR THE ION SUBDIVISION.
6. ROADWAY INFORMATION: SEE PLAN SHEET 12/1/04 FOR ALL ROADWAY INFORMATION.

7. LOT AND ACREAGE DATA

ITEM	RESIDENTIAL LOTS	COMMERCIAL LOTS	CIVIC LOTS	TOTAL
RESIDENTIAL LOTS	762	0	0	762
COMMERCIAL LOTS	0	10	0	10
CIVIC LOTS	0	0	10	10
TOTAL	762	10	10	782

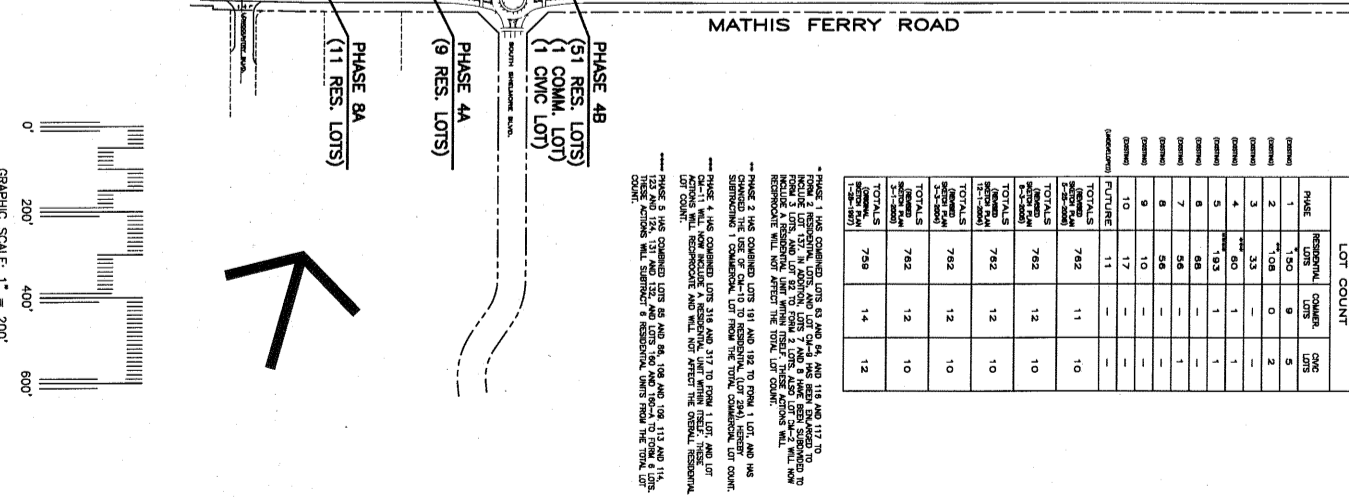
NOTE: THE REVISIONS TO THIS PLAN (1-1-04) TOTAL ACREAGE INCLUDES 1.0 ACRE OF PROPERTY THAT WAS PREVIOUSLY SET ASIDE FOR THE ION SUBDIVISION. THE ION COMPANY HAS BEEN AWARDED A CONTRACT BY THE ION COMPANY FOR THE ION SUBDIVISION. THE ION COMPANY HAS BEEN AWARDED A CONTRACT BY THE ION COMPANY FOR THE ION SUBDIVISION.

I'ON COMMUNITY MAP



PLAT STATUS

PLAT / PHASE	PRELIMINARY APPROVAL	CONDITIONAL APPROVAL	FINAL APPROVAL	RESIDENT LOTS	COMMERCIAL LOTS	CIVIC LOTS
1A	7/9/97	7/98	7/98	50 (-1)	0	0
1B	7/9/97	7/98	7/98	76 (-1)	0	0
1C	7/9/97	7/98	7/98	76 (-1)	0	0
1D	7/9/97	7/98	7/98	76 (-1)	0	0
1E	7/9/97	7/98	7/98	76 (-1)	0	0
1F	7/9/97	7/98	7/98	76 (-1)	0	0
1G	7/9/97	7/98	7/98	76 (-1)	0	0
1H	7/9/97	7/98	7/98	76 (-1)	0	0
1I	7/9/97	7/98	7/98	76 (-1)	0	0
1J	7/9/97	7/98	7/98	76 (-1)	0	0
1K	7/9/97	7/98	7/98	76 (-1)	0	0
1L	7/9/97	7/98	7/98	76 (-1)	0	0
1M	7/9/97	7/98	7/98	76 (-1)	0	0
1N	7/9/97	7/98	7/98	76 (-1)	0	0
1O	7/9/97	7/98	7/98	76 (-1)	0	0
1P	7/9/97	7/98	7/98	76 (-1)	0	0
1Q	7/9/97	7/98	7/98	76 (-1)	0	0
1R	7/9/97	7/98	7/98	76 (-1)	0	0
1S	7/9/97	7/98	7/98	76 (-1)	0	0
1T	7/9/97	7/98	7/98	76 (-1)	0	0
1U	7/9/97	7/98	7/98	76 (-1)	0	0
1V	7/9/97	7/98	7/98	76 (-1)	0	0
1W	7/9/97	7/98	7/98	76 (-1)	0	0
1X	7/9/97	7/98	7/98	76 (-1)	0	0
1Y	7/9/97	7/98	7/98	76 (-1)	0	0
1Z	7/9/97	7/98	7/98	76 (-1)	0	0
TOTAL COUNT				762	10	10



NO.	DATE	REVISION NOTES
1	12/1/04	NOTE THAT PHASE 9, A FUTURE PHASE, HAS REDUCED ITS LOT COUNT BY TWO TO ACCOMMODATE THE JEFFERSON CANNAL DEVELOPMENT.
2	8/3/05	REMOVE PORTION OF ROADWAY IN PHASE 9.
3	5/25/06	ADJUST LOTS CM-9 & CM-12 TO 3 RESIDENTIAL LOTS.
4	2/22/07	LOT ASSESSMENT BY OWNER

ION COMMUNITY MAP

PROJECT: 4818.20
DATE: 12/1/04
DRAWN BY: TBC
CHECKED BY: SOW
PLOT SCALE: 1" = 200'
SERVER FILENAME: 4818\SCHEMATIC-REVISED.DWG

SEAMON, WHITESIDE & ASSOCIATES, INC.
503 WANDO PARK BLVD.
MOUNT PLEASANT, SC 29544-7849
(803) 884-6677
FAX: (803) 884-6678
WWW.SEAMONWHITESIDE.COM

THE ION COMPANY
MOUNT PLEASANT, SOUTH CAROLINA

SEAMON, WHITESIDE & ASSOCIATES, INC.
REGISTERED PROFESSIONAL ENGINEERS
SOUTH CAROLINA
NO. 3502
EXPIRES 12/31/10

OPERATOR: BERT
DATE: 12/1/04
DRAWN BY: TBC
CHECKED BY: SOW
PLOT SCALE: 1" = 200'